

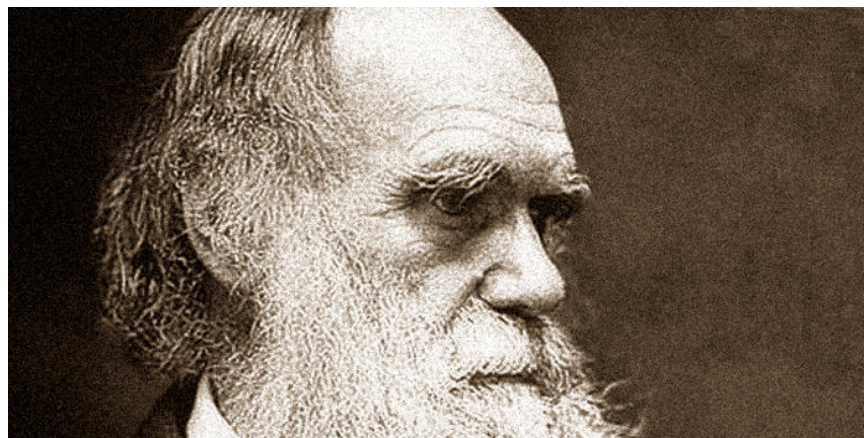


ISO 19157 – A Framework for Progress on Data Quality

The ISO Data Quality Metadata standards are evolving.

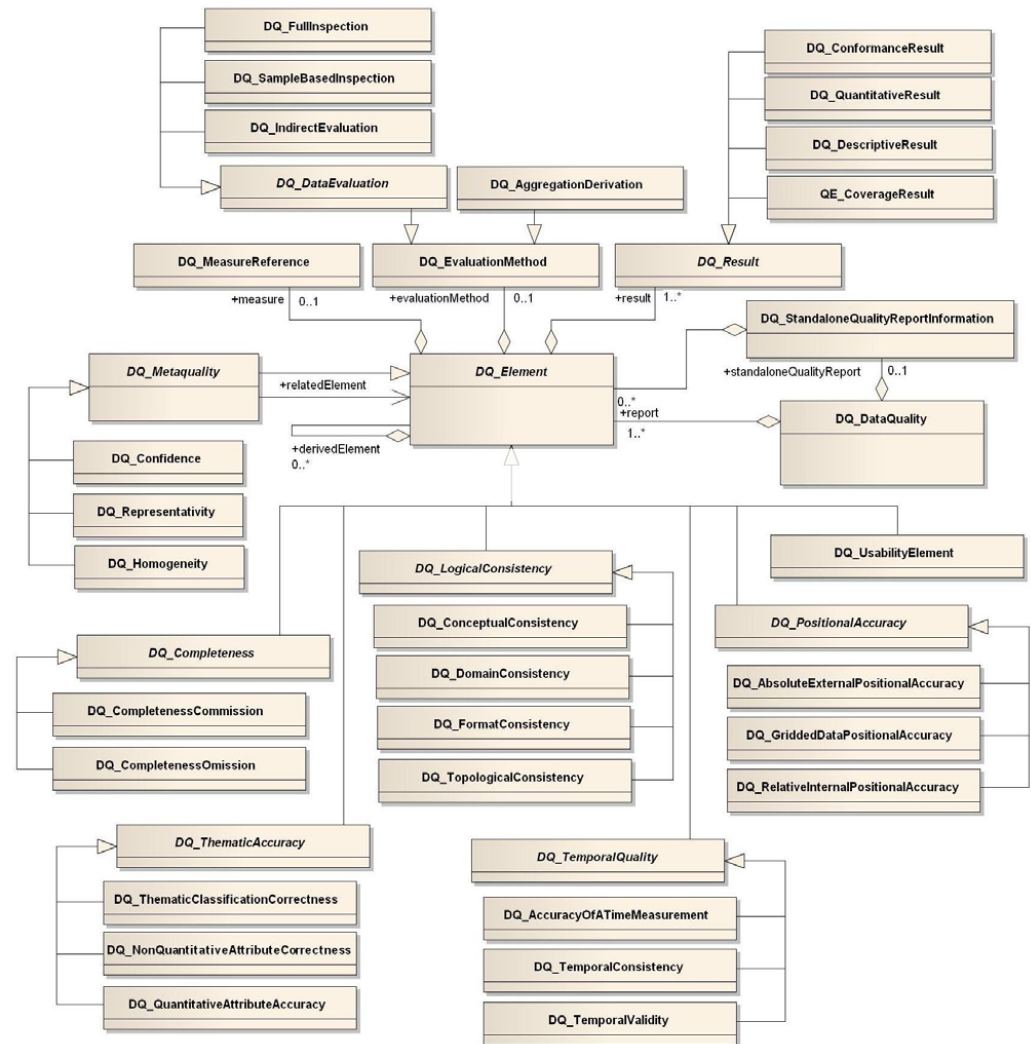
Evolution is good.

Ted Habermann
Director of Earth Science
The HDF Group
thabermann@hdfgroup.org



ISO 19157 is a conceptual model of data quality that was recently approved as an international standard. It combines concepts from three older standards into a unified conceptual model for describing data quality.

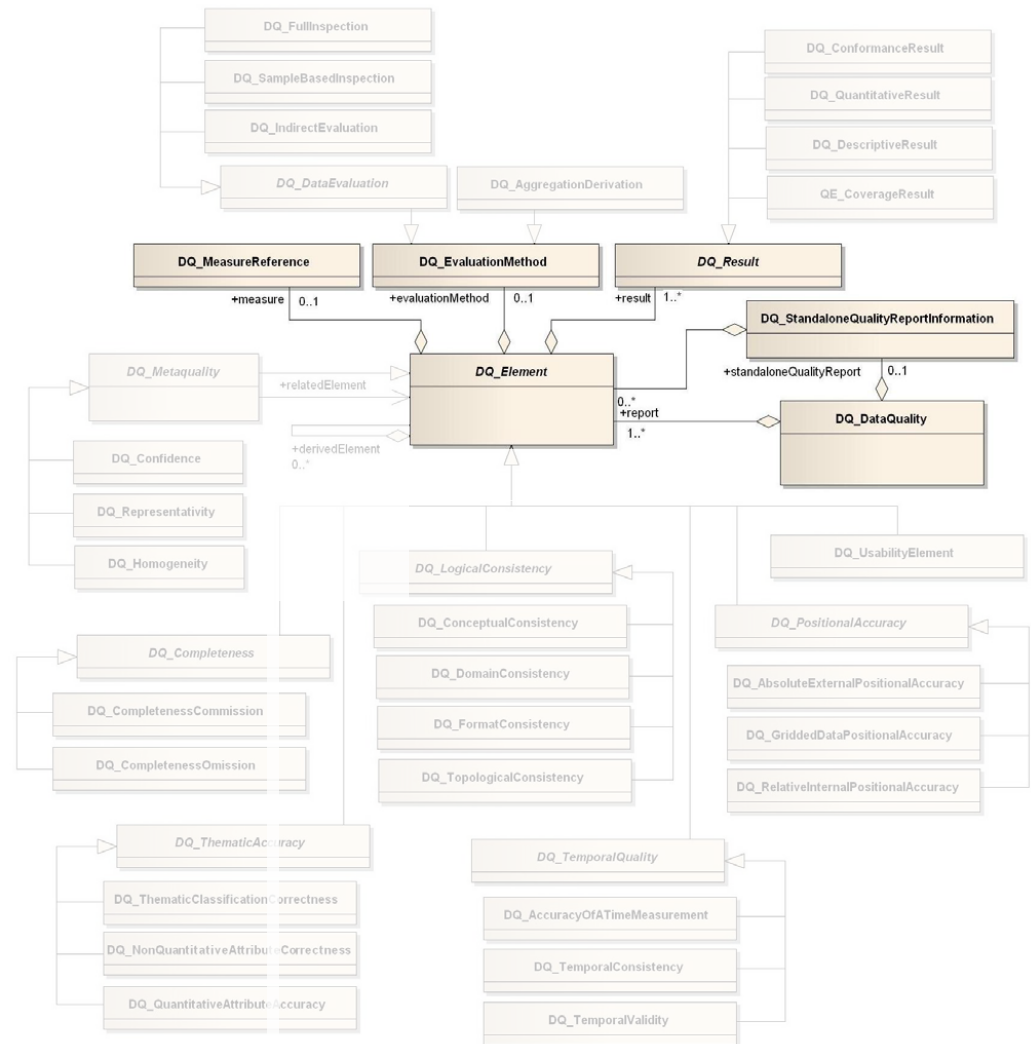
Many of the principle elements of this conceptual model are abstract, and can be implemented in several ways.

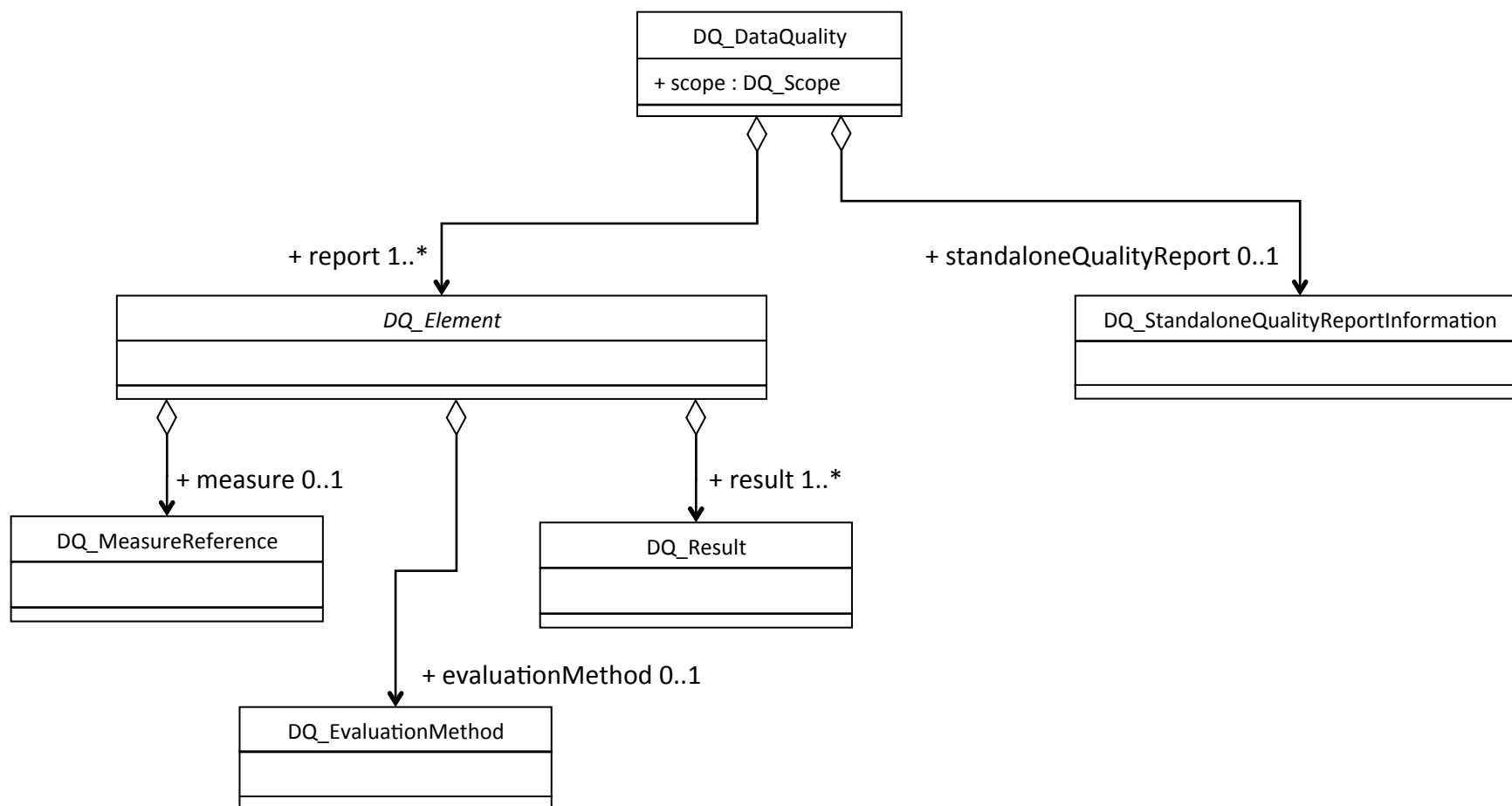


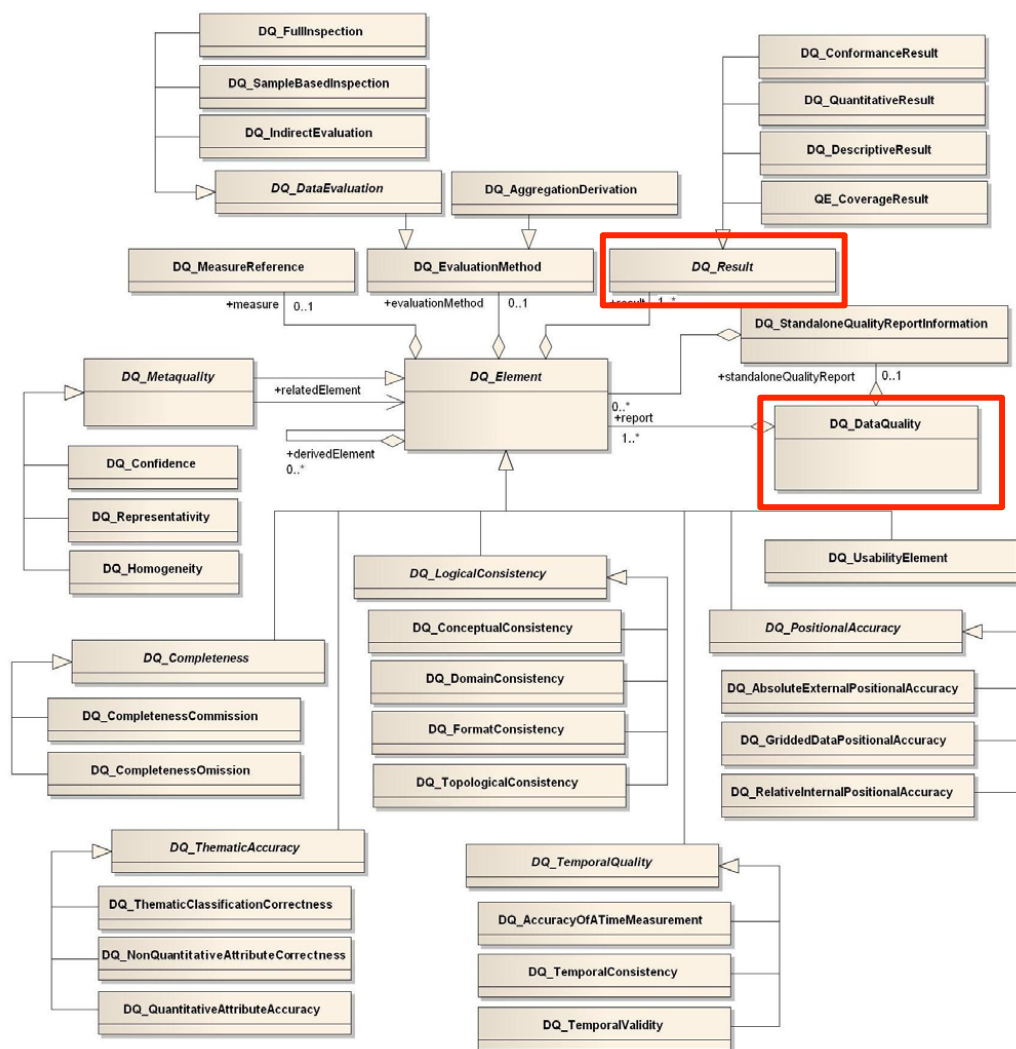
ISO 19157 is a conceptual model of data quality that was recently approved as an international standard. It combines concepts from three older standards into a unified conceptual model for describing data quality.

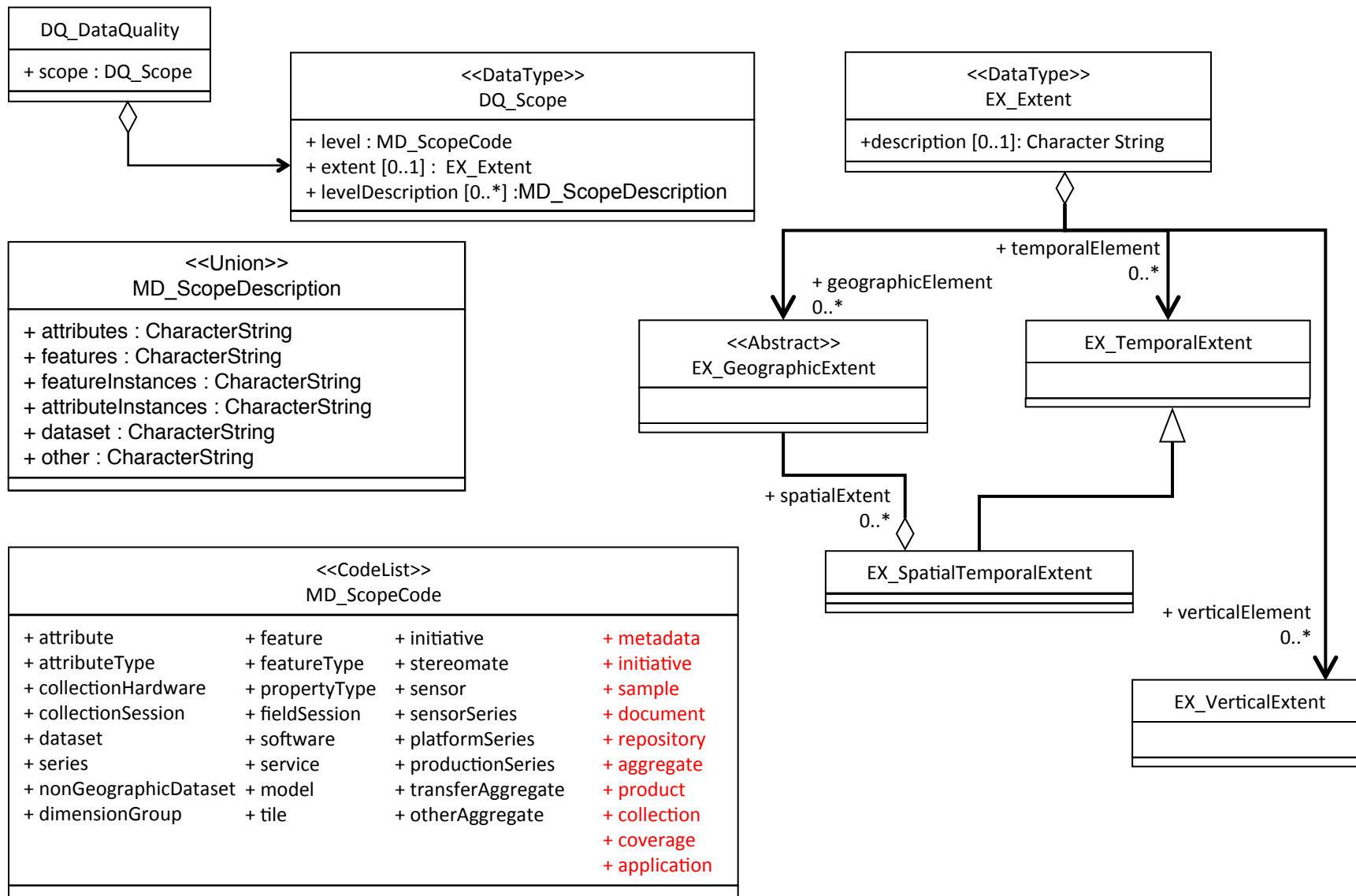
Many of the principle elements of this conceptual model are abstract, they can be implemented in several ways.

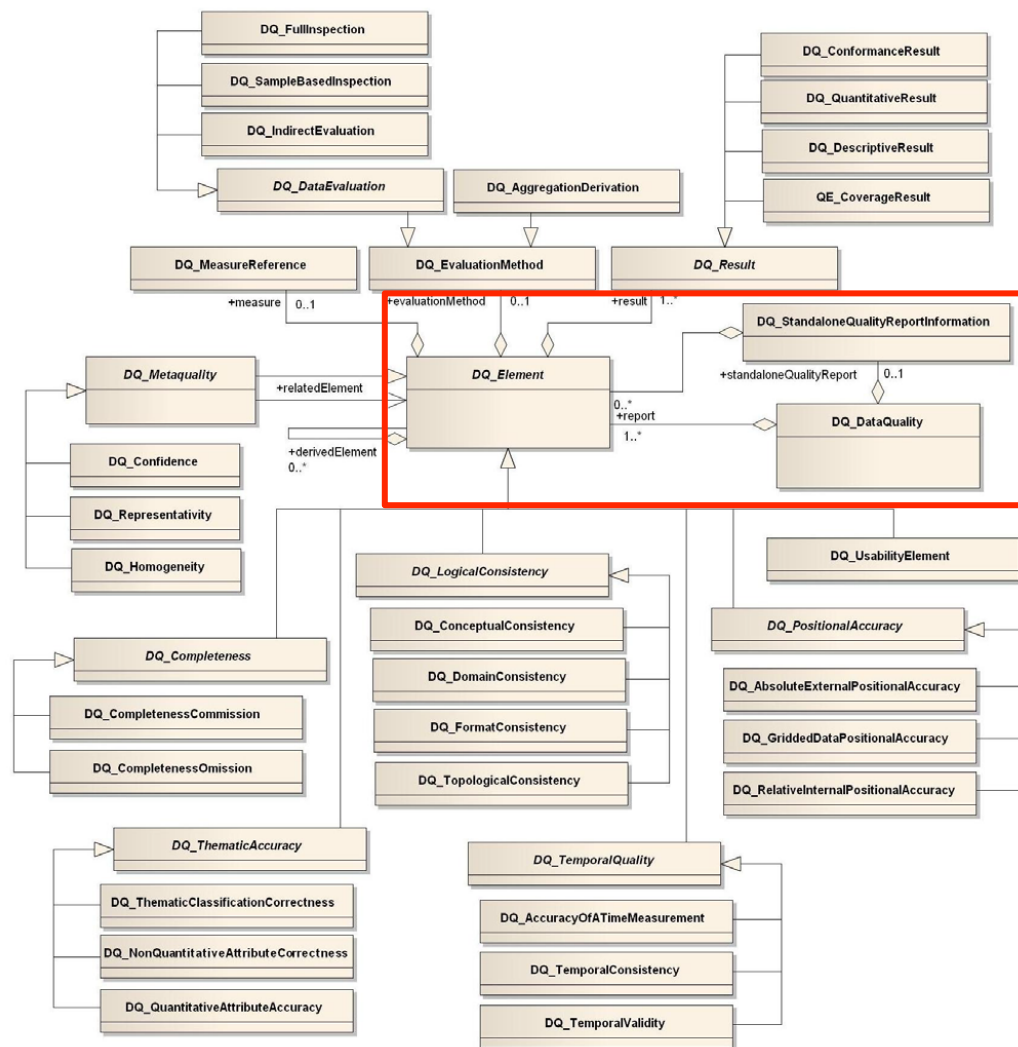
When only the abstract concepts are considered, the model is very simple.

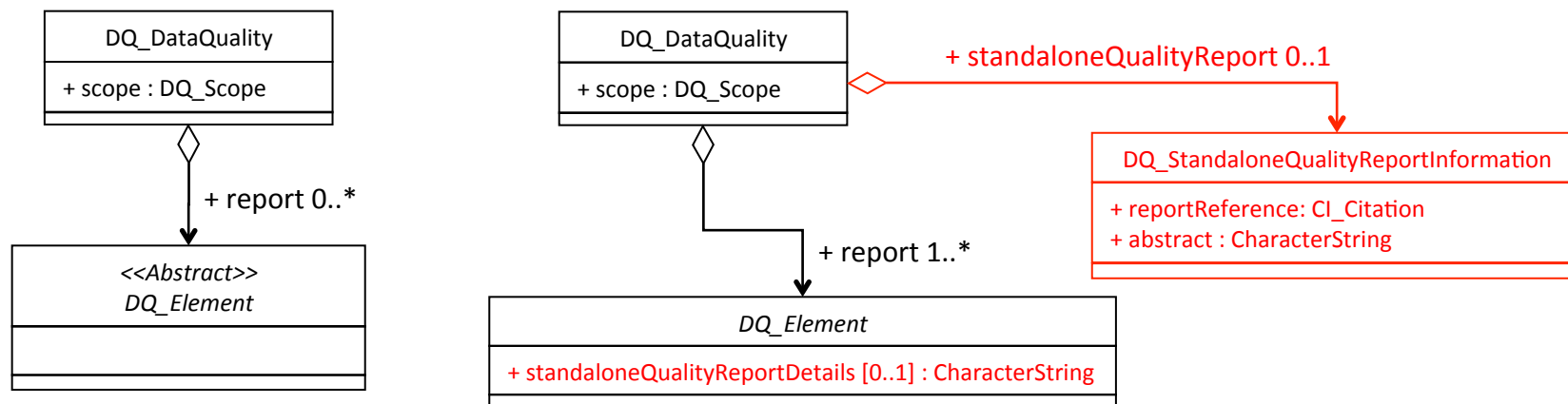






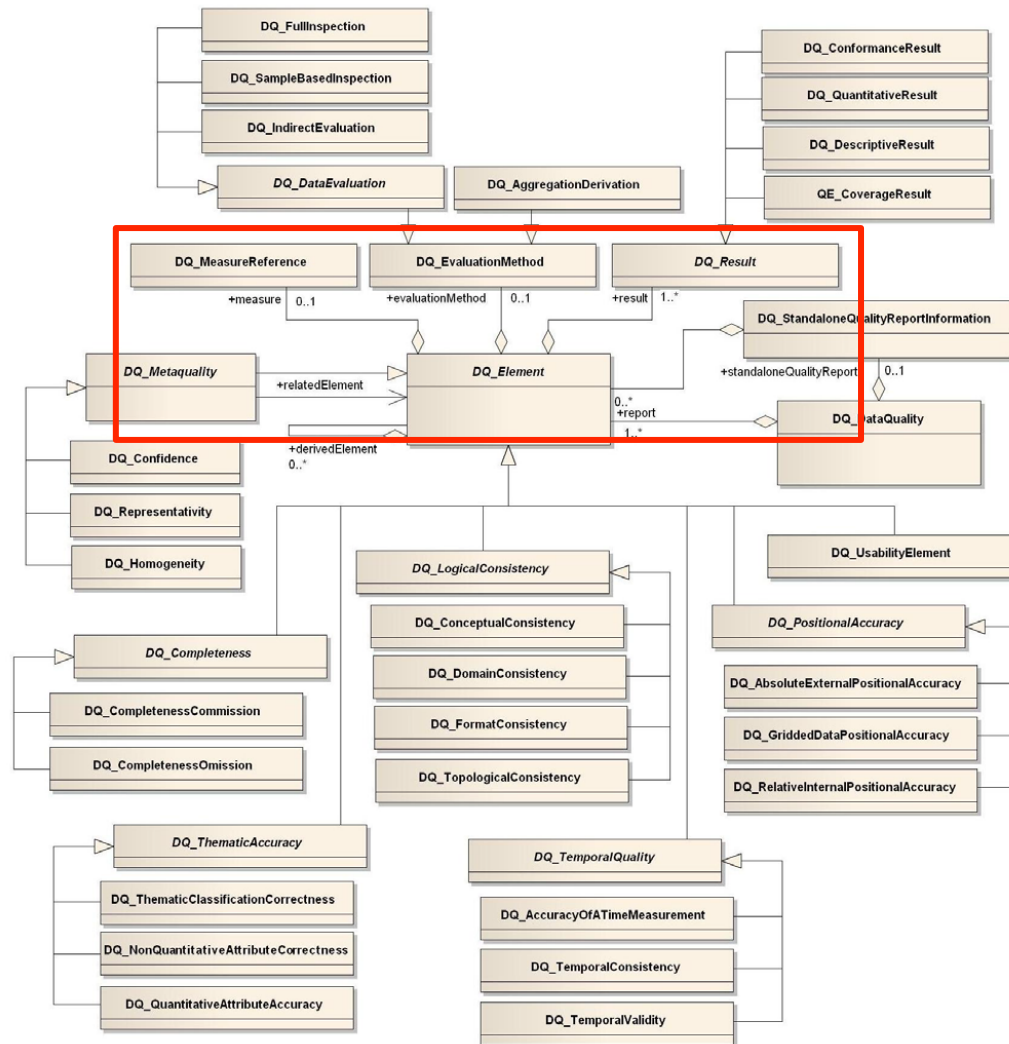


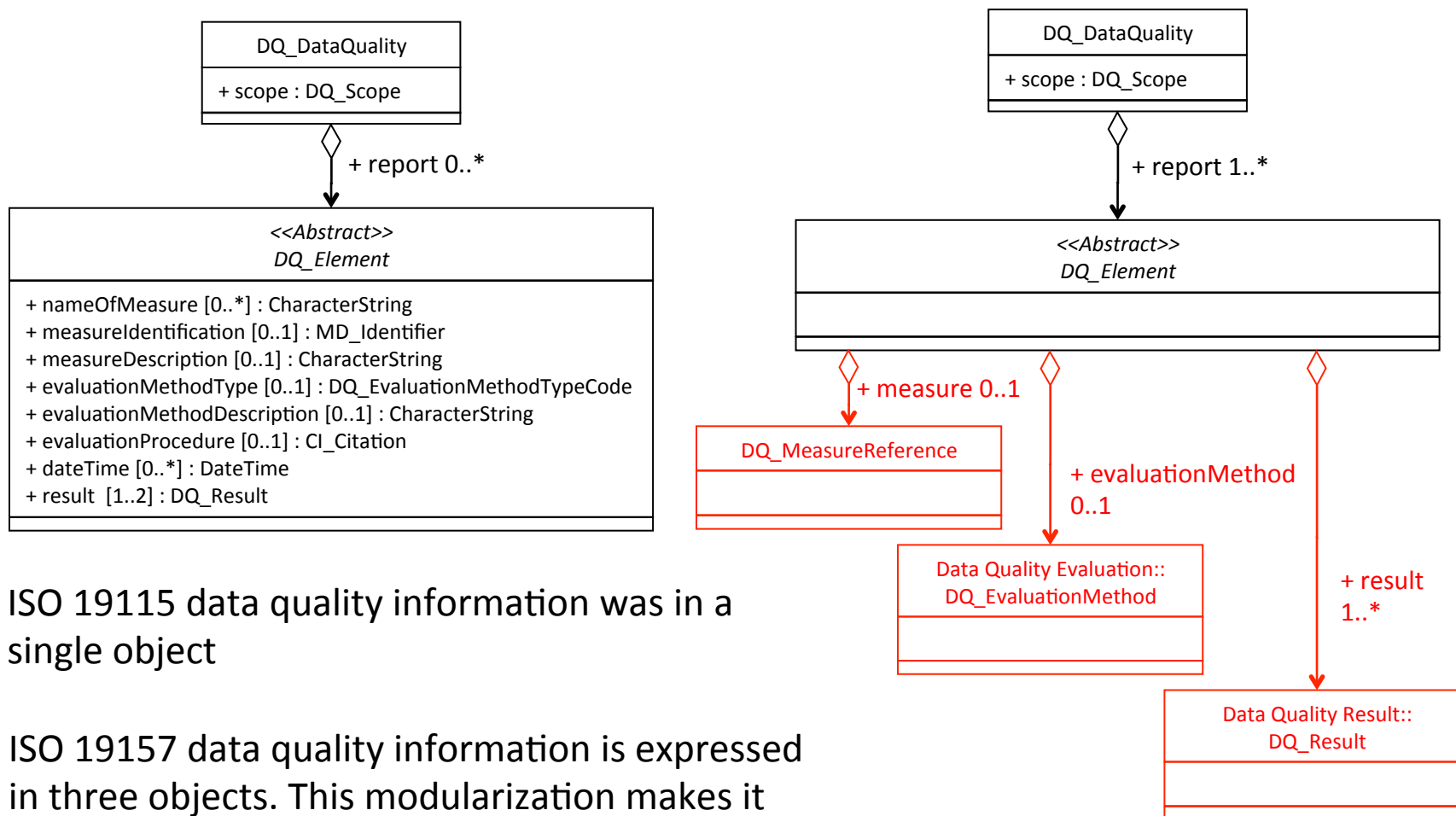




ISO 19115 data quality included any number of reports that were described using the ISO 19115 conceptual model

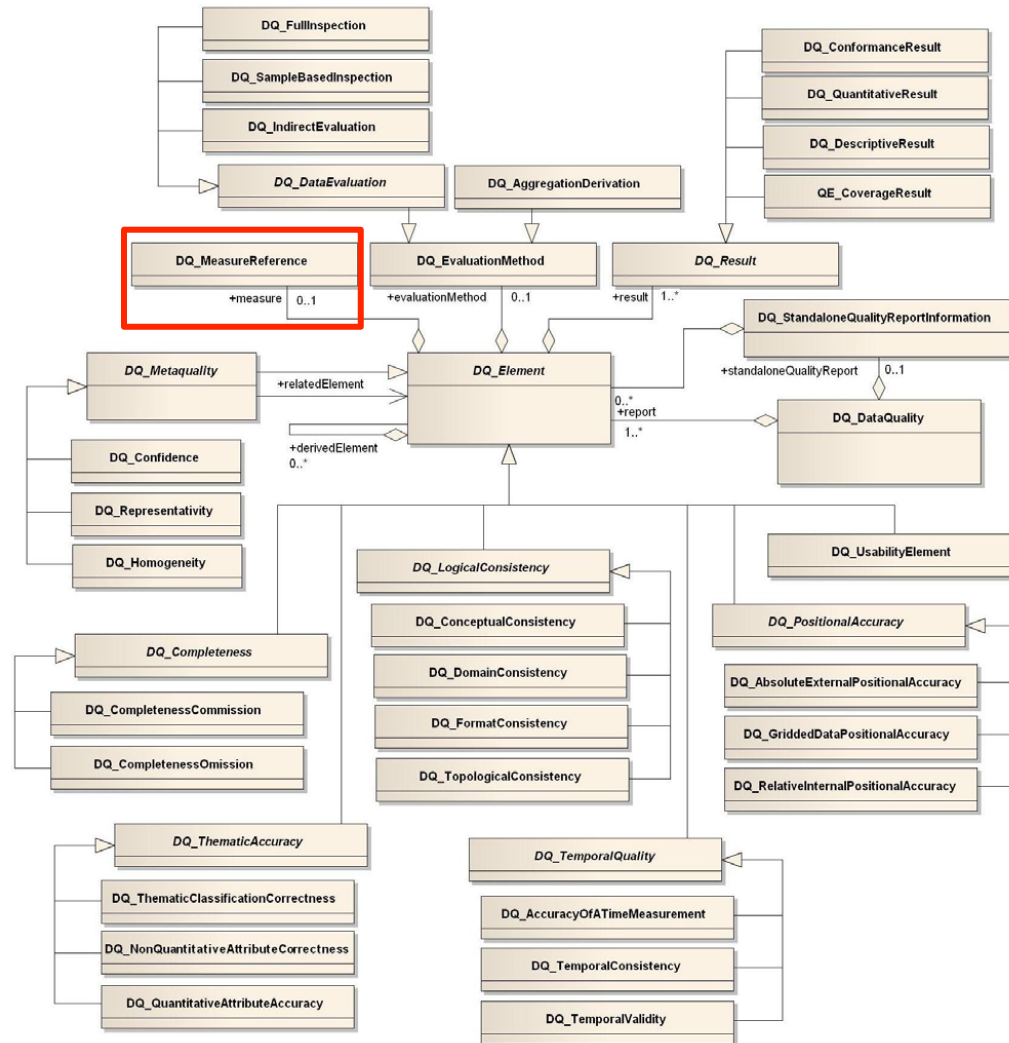
ISO 19157 data requires at least one report (could be nil) and acknowledges that important quality information can exist in standalone reports that may not fit easily into the ISO conceptual model. These standalone reports are cited with abstracts that summarize the results for the user without necessitating access to the cited report.

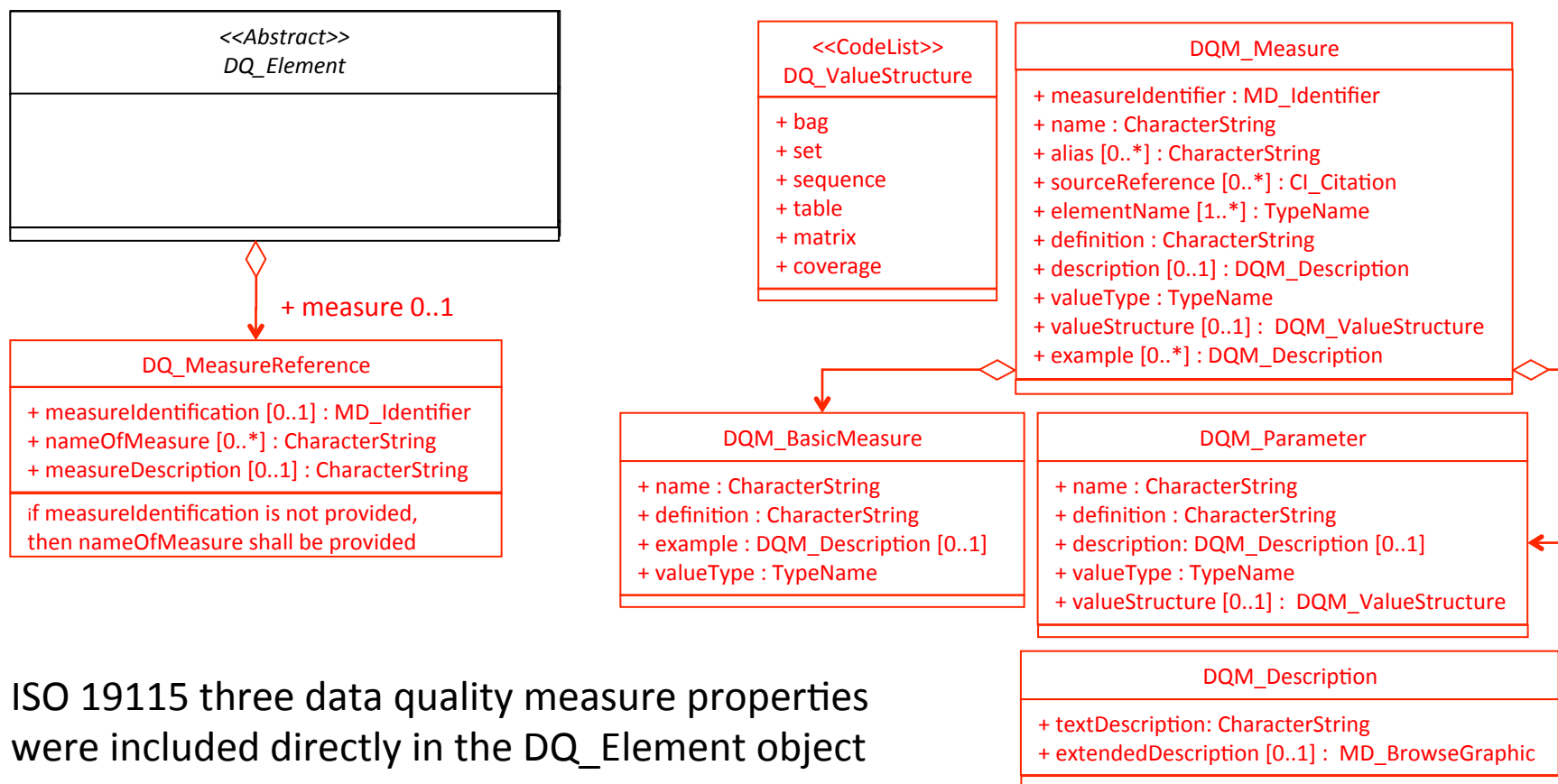




ISO 19115 data quality information was in a single object

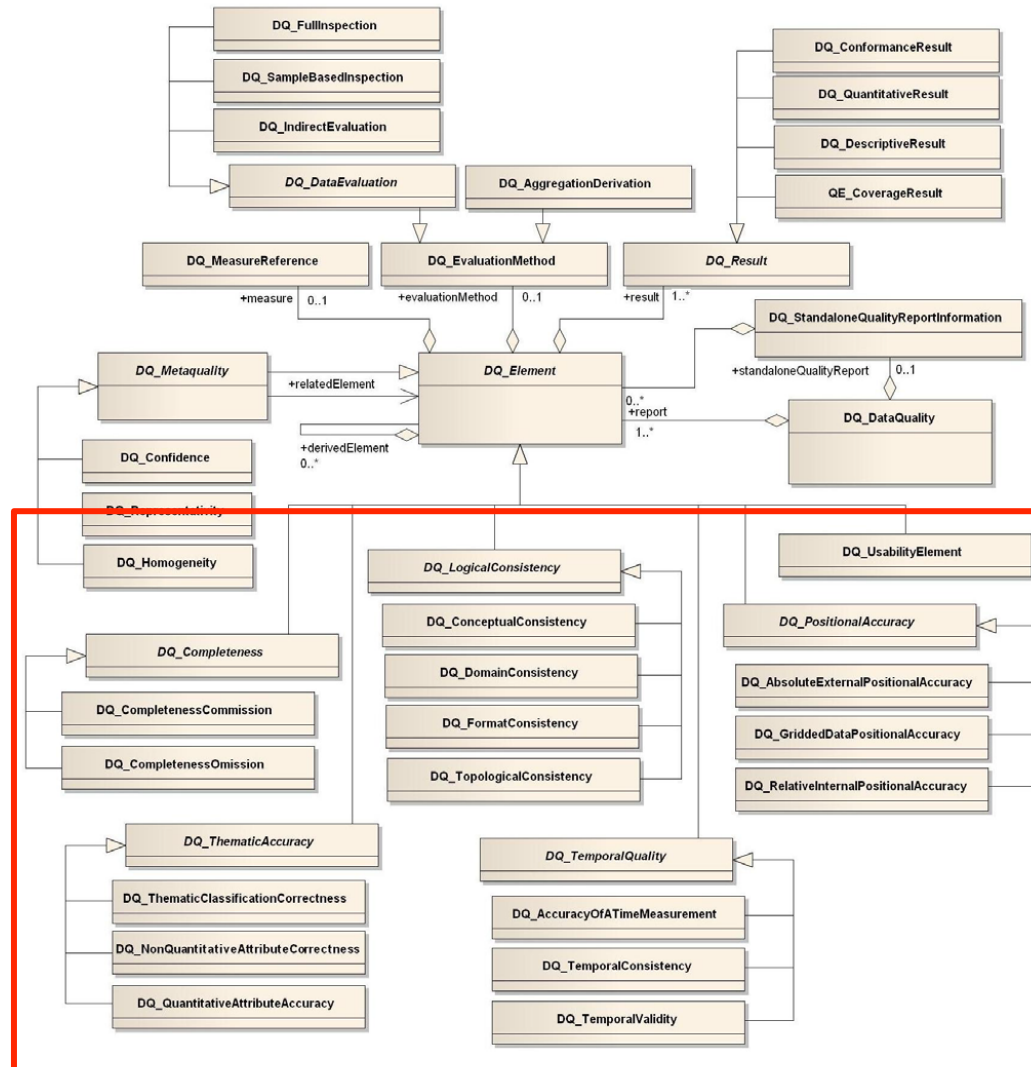
ISO 19157 data quality information is expressed in three objects. This modularization makes it easier and more flexible to connect to existing data quality systems.

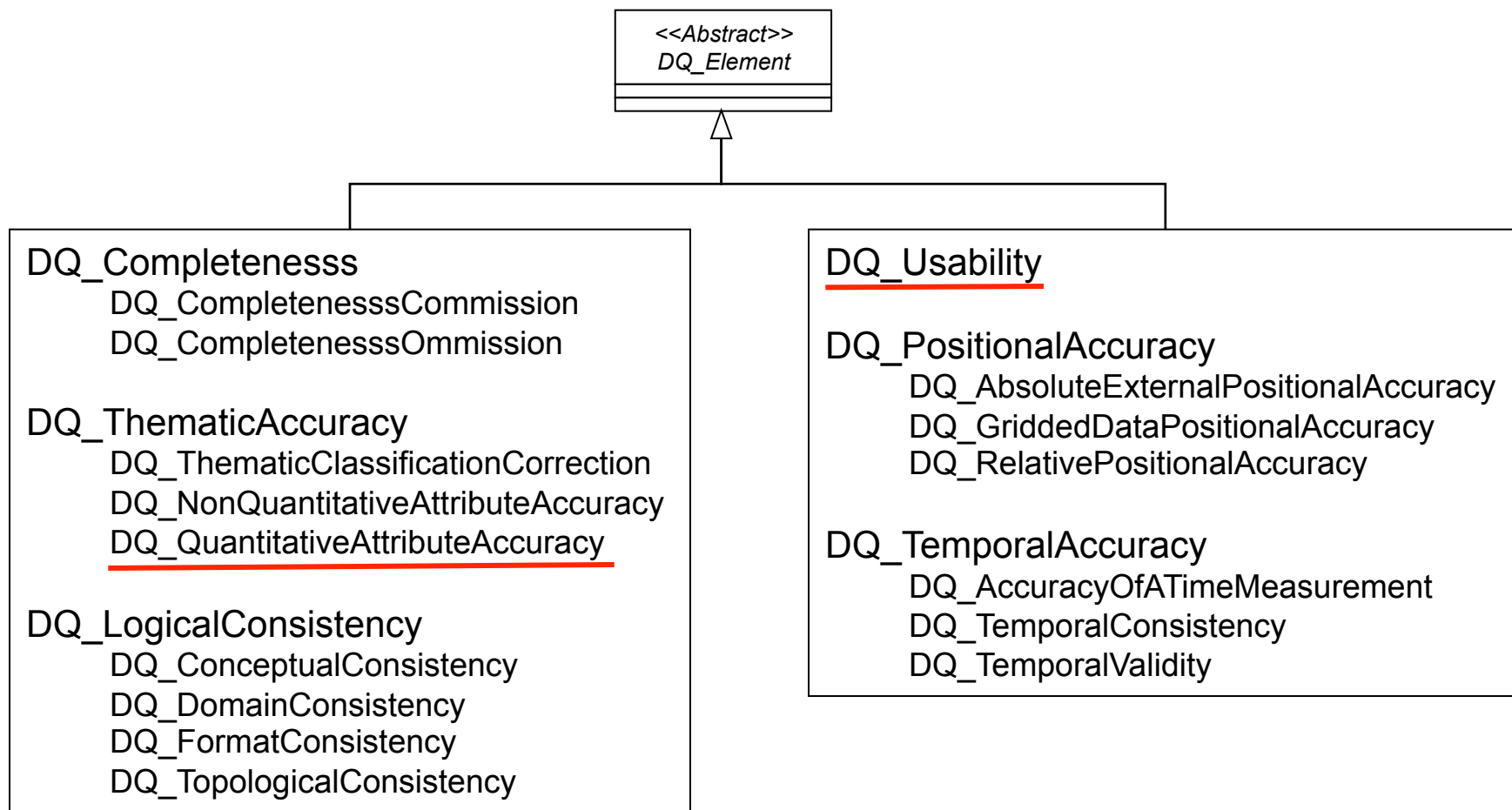




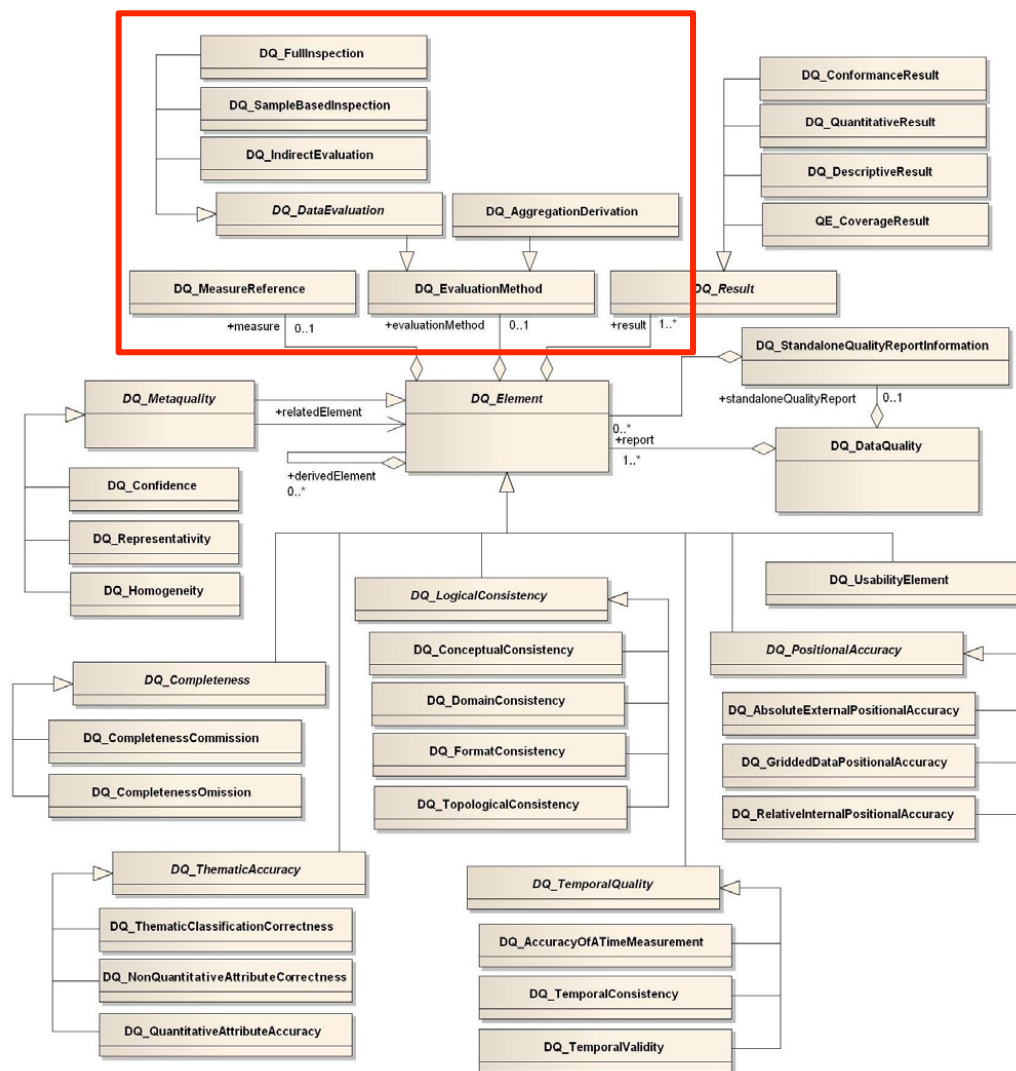
ISO 19115 three data quality measure properties were included directly in the DQ_Element object

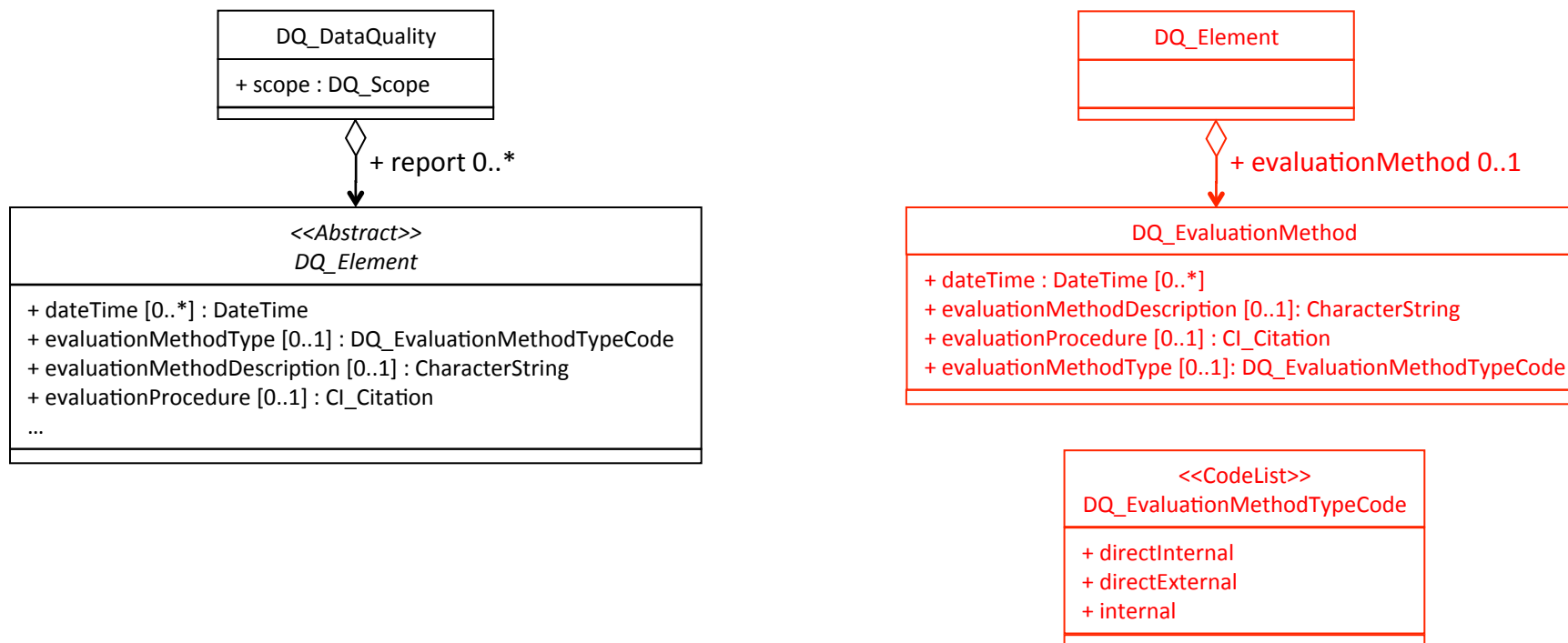
ISO 19157 data quality measure properties are in a separate object and provide a much more complete description of the measures.





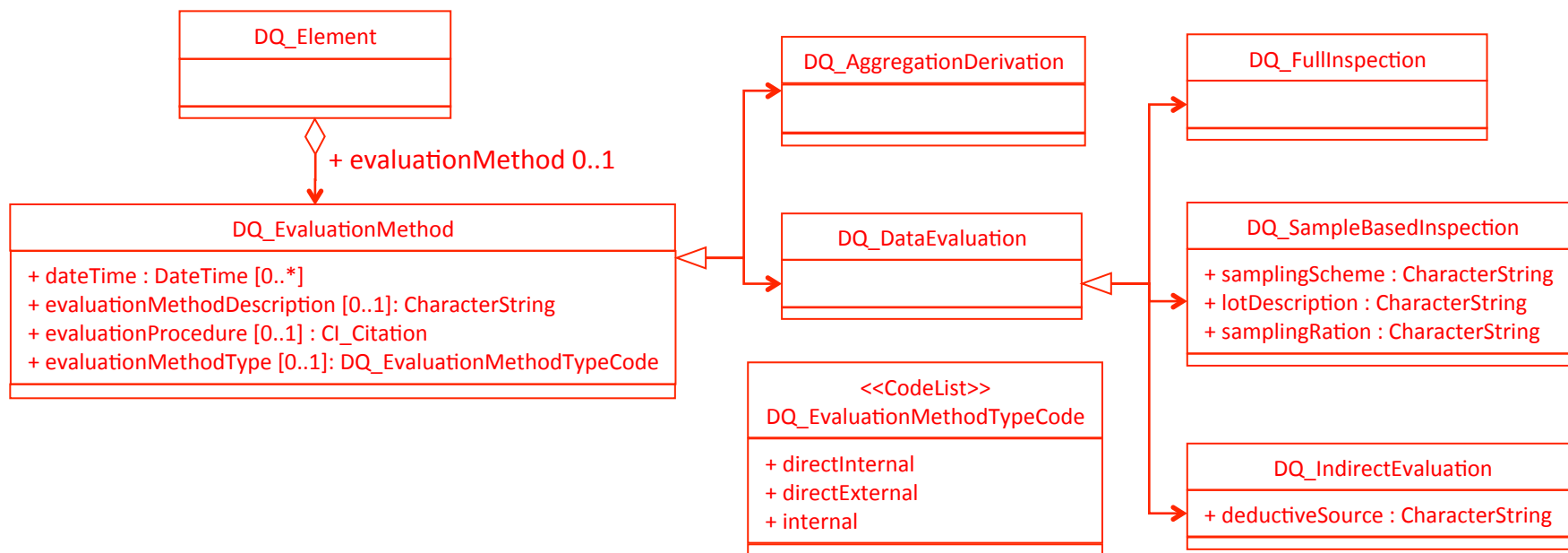
Did not change between 19115 and 19157





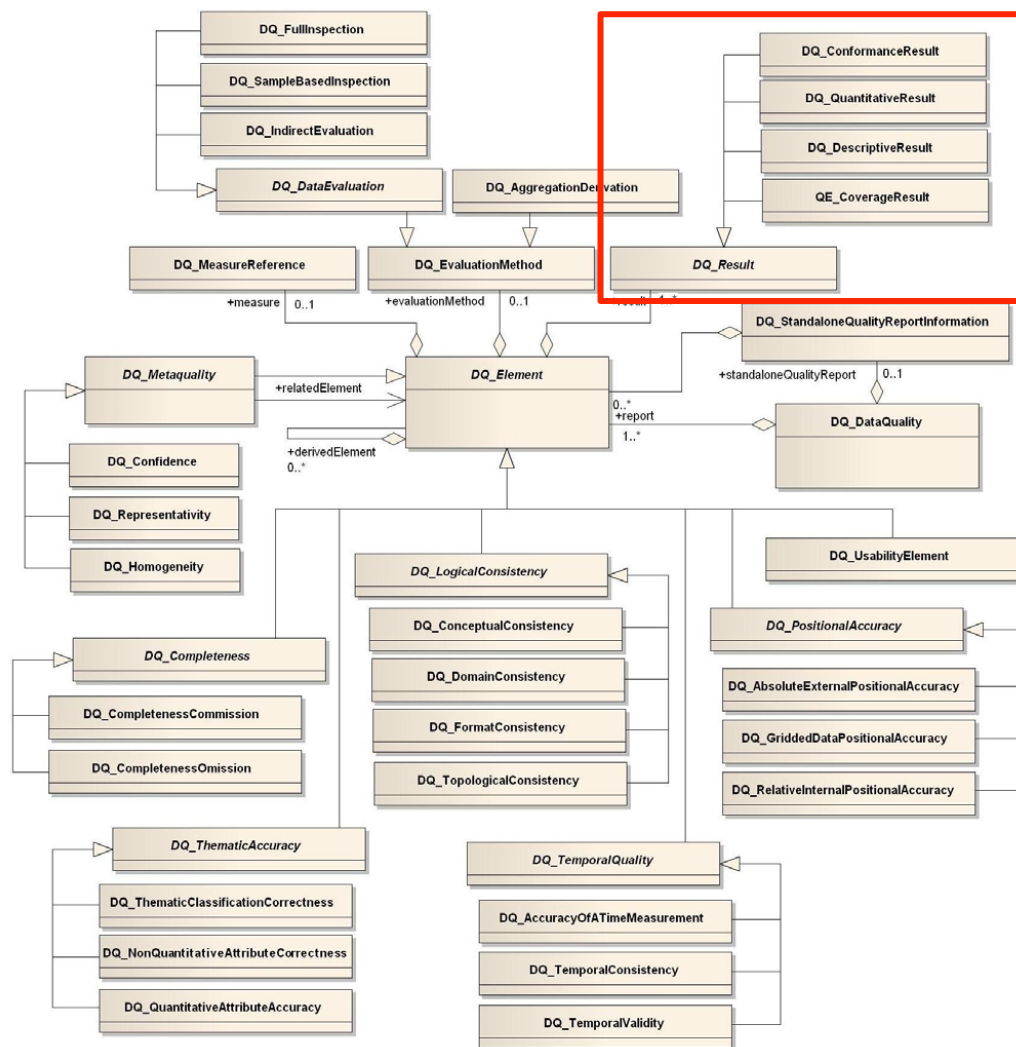
ISO 19115 three data quality evaluation properties were included directly in the DQ_Element object

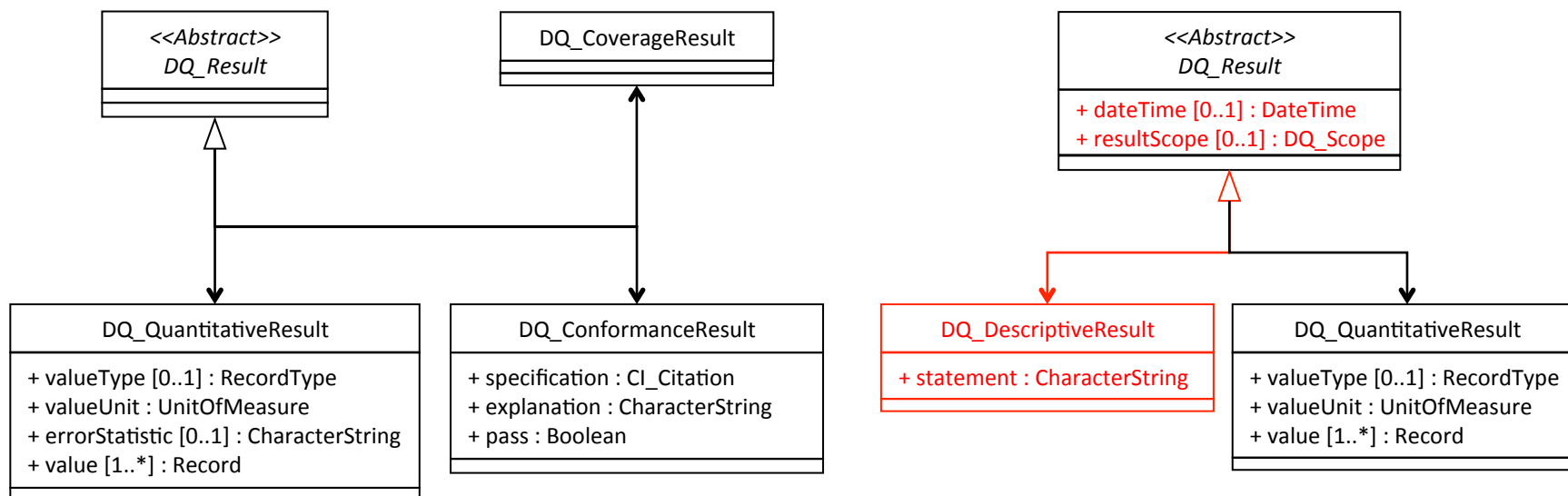
ISO 19157 data quality evaluation properties are in a separate object.



ISO 19115 allowed the specification of the evaluation as internal or external.

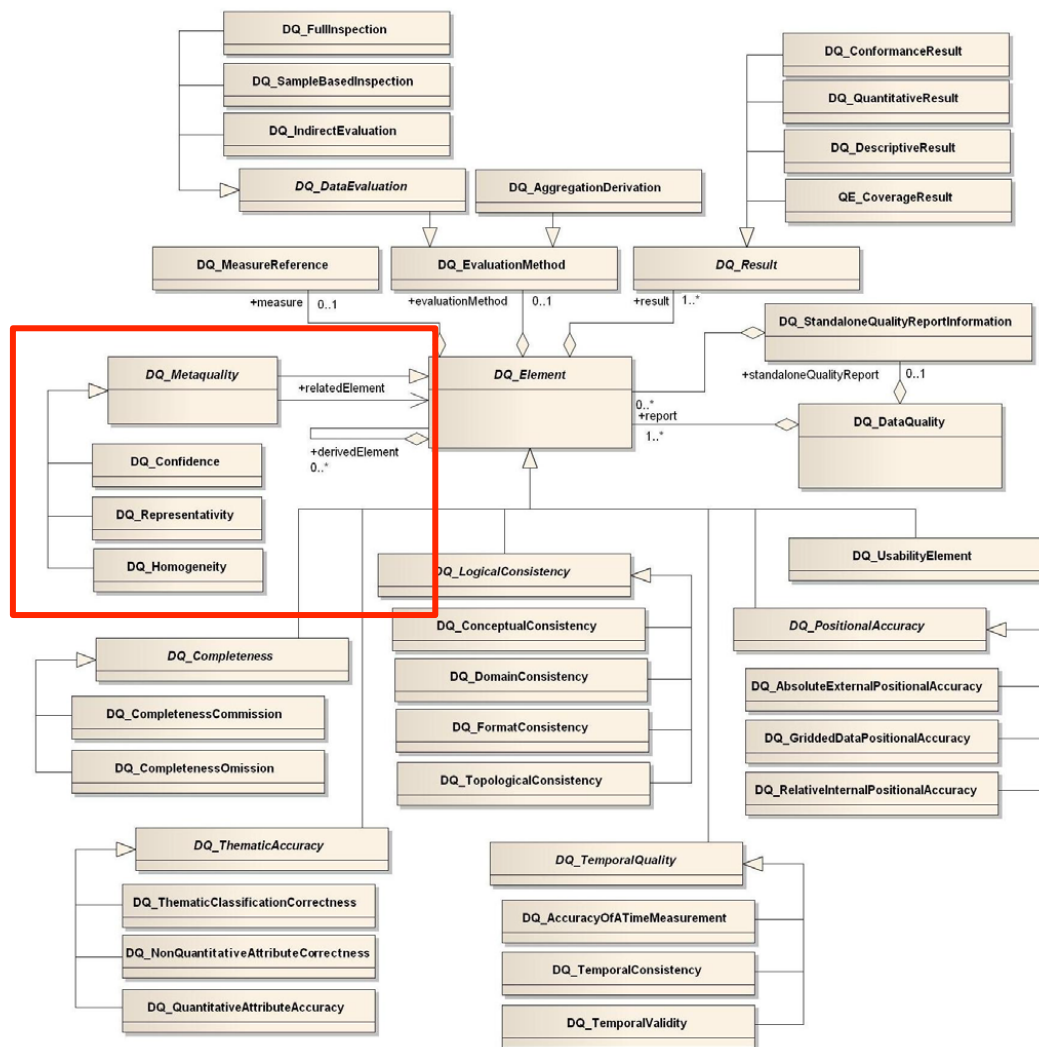
ISO 19157 provides more details about these evaluation techniques.

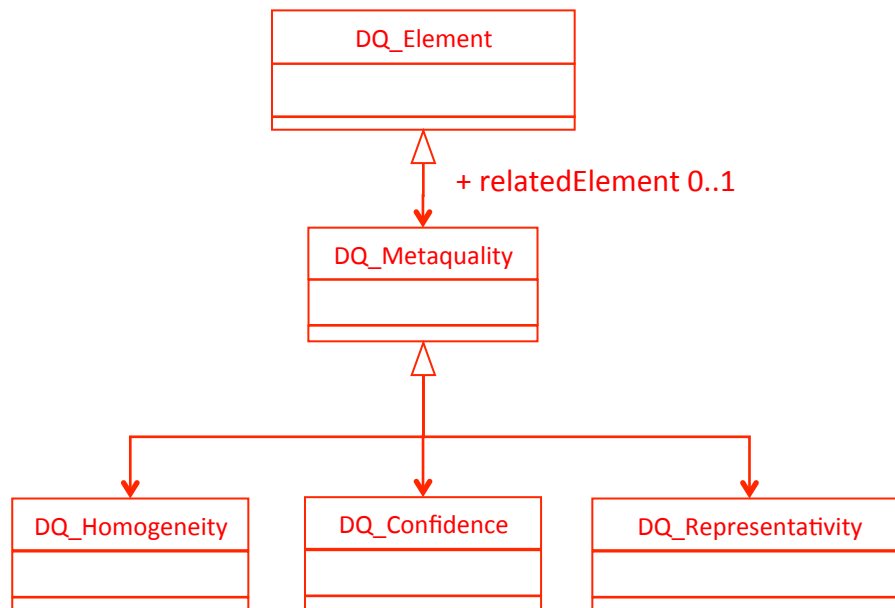
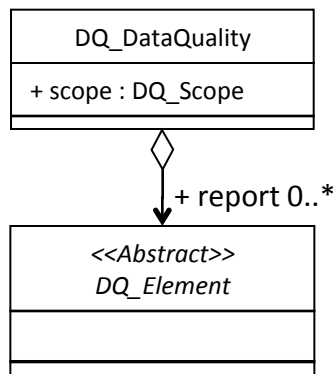




ISO 19115(-2) included three kinds of data quality reports: DQ_QuantitativeResult, DQ_ConformanceResult, and DQ_CoverageResult (from 19115-2).

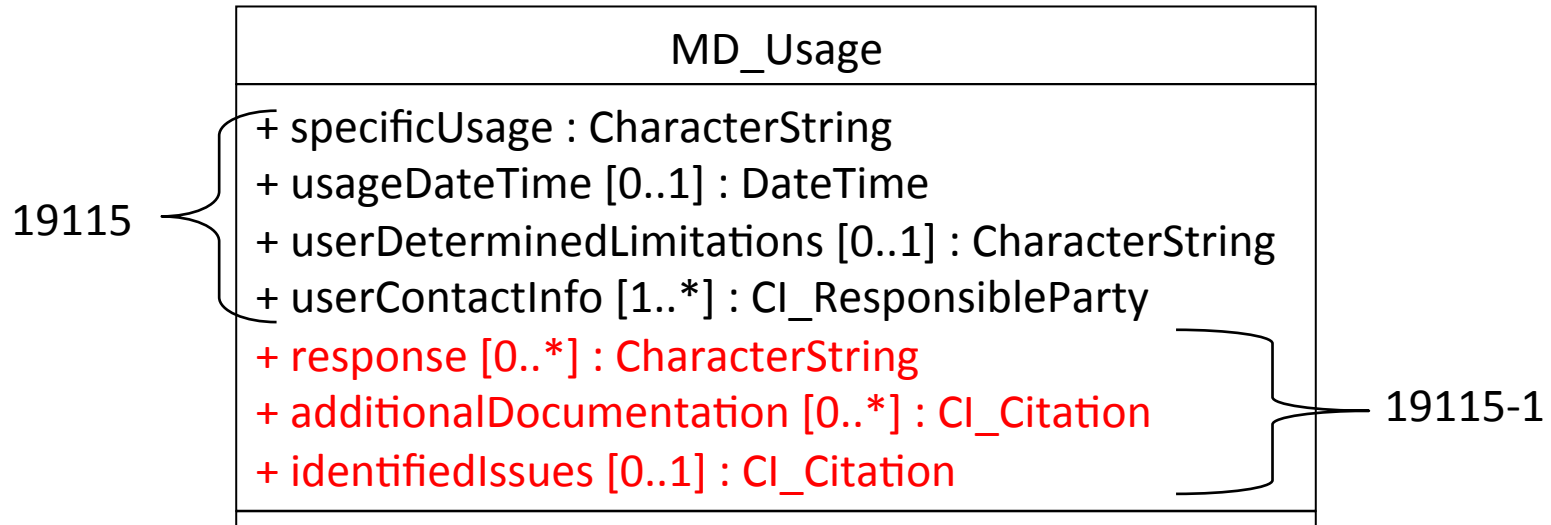
ISO 19157 adds a resultScope that allows multiple scopes in a single DQ_DataQuality object and includes a new kind of report (DQ_DescriptiveResult) that includes a simple text description of the result of the quality test.





ISO 19115 provided a complete model for reporting quality, but no ability to describe the quality of the quality determination

ISO 19157 includes three types of metadata quality reports.

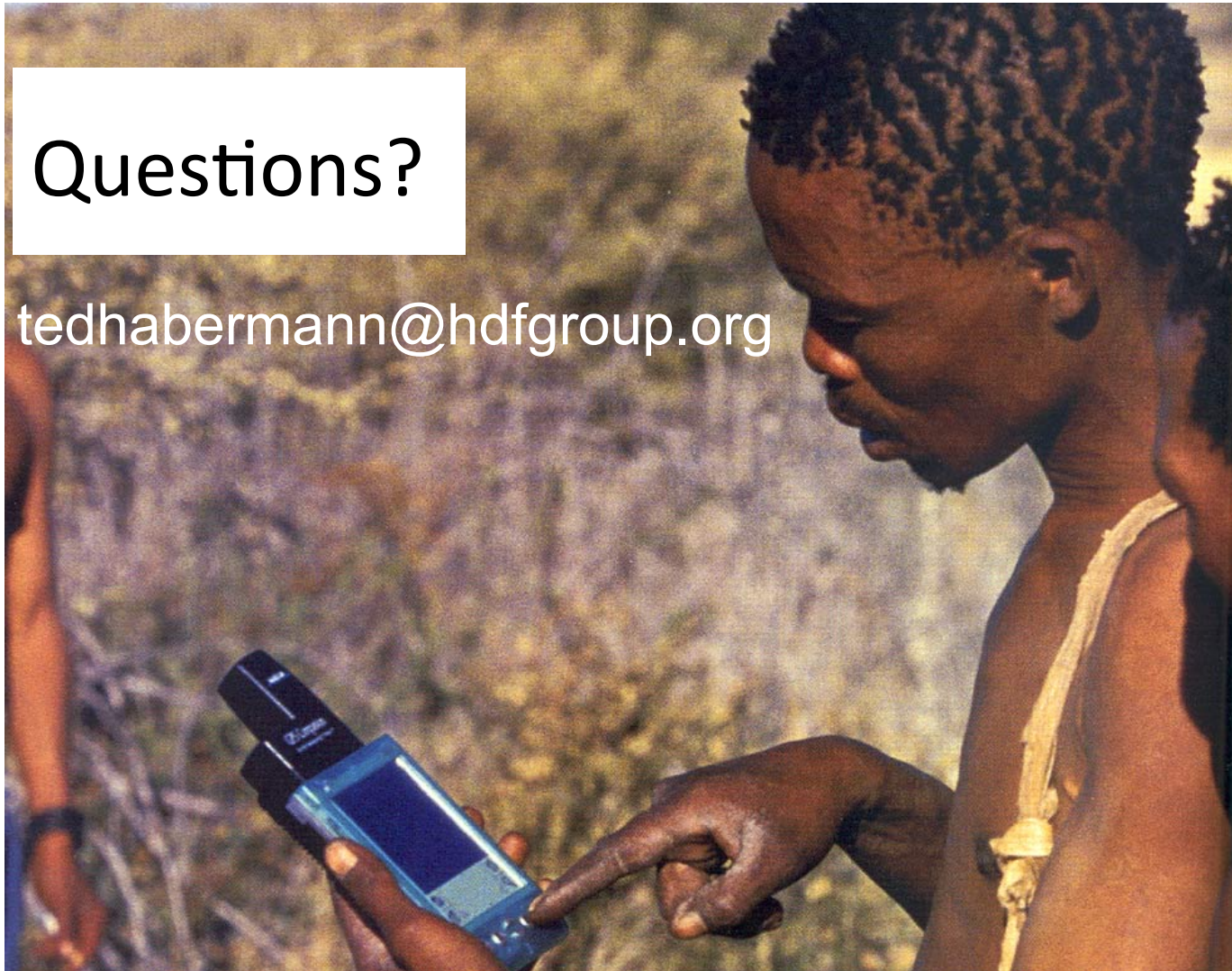


Data are used in a variety of sometimes unexpected ways. In some cases, those users identify limitations or usability problems. ISO 19115 includes information about when and how users are using data as well as limitations that they identify.

ISO 19115-1 introduces the capability for data providers to document known limitations and include responses to those users. This is an important mechanism for helping users understand how datasets are improved or updated in response to their input.

Questions?

tedhabermann@hdfgroup.org



Any opinions, findings, conclusions, or recommendations expressed in this material are those of the author and do not necessarily reflect the views of NASA or The HDF Group.